

**See Through Indoor / Outdoor
Framing and Window
Installation Instructions**

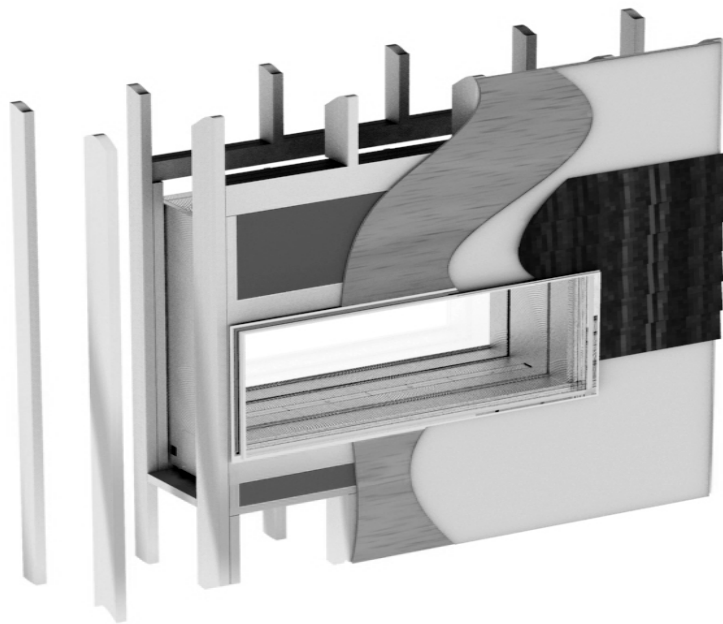


These Instructions are an addendum to the

DaVinci Fireplace

Installation Manual

This addendum is only for use with the Indoor / Outdoor Window Kits, replacing the framing dimensions section and providing addition installation instructions for the “Extruded Aluminum Window Kit”.



Qualified Installers Only:

- This unit may only be installed by qualified installers.
- We recommend that the sealed glass panel be installed by a qualified glazier or specially trained ‘Da’ Vinci installer.

Recommended Installation Order



We strongly recommend having a qualified framer on hand while installing the exterior window onto a DaVinci custom fireplace. This process requires very precise measurements. A framer may be required to match the position of the fireplace to the external framing.

- a) Line up the fireplace platform with the external opening.

The external opening should be 3" (78mm) taller than the glass size (1.5" (39mm) above & below).

FOR EXAMPLE: If using 20" glass, make the opening 23" (585mm) tall.

The external opening should be 3" (78mm) wider than the glass size (1.5" (39mm) to each side).

FOR EXAMPLE: If using a 48" wide fireplace, make the opening 51" (1296mm) wide.

- b) Verify the platform height and how it lines up with the external opening. This measurement must be precise – double-check this dimension with the fireplace and the alignment track.

The external glass (window) will be 12.5" (318mm) above the base of the fireplace (includes alignment track – if not using the alignment track it will be 11" (280mm) above the base).

- c) Place the fireplace on the platform/alignment track.

Do not secure the fireplace to the track (or track to the platform) at this time.

Make sure you install the fireplace the correct direction – the fireplace controls should be accessible from inside the structure.

- d) Attach the butyl gasket to the fireplace. The gasket wraps around the window opening (place it 1/16" (2mm) back from the opening).
- e) Line up the external window frame with the fireplace (the inside edge of external window frame should be flush with the glass track/burners on the fireplace). The external frame may be lightly tacked to the framing to help hold it in the correct position.
- f) Make any adjustments at this point to the fireplace/window frame to ensure proper alignment.
- g) Secure the external window frame to the fireplace.
- h) Secure the external window frame to the framing.
- i) Secure the fireplace/alignment track to the platform.
- j) Install the remaining external wall framing/sheathing (use appropriate window sill protection around the window opening).
- k) Install the remaining external window components.

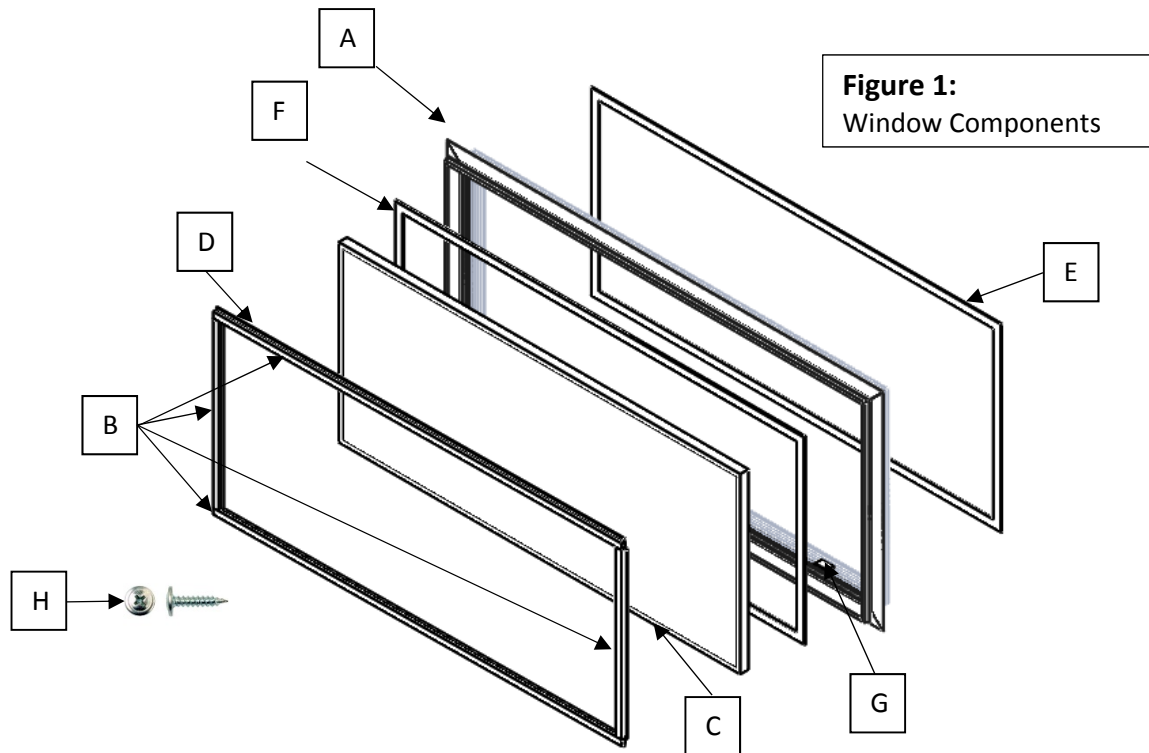
Indoor / Outdoor Unit

Overview

This manual details the framing and installation of the 'Da' Vinci Indoor / Outdoor See Through, fireplace models outline in table:

Window Kit Contents

Identifier	Description	Quantity
A.	External window frame (aluminm).	1
B.	Aluminum window frame retainers.	4 (top, bottom & 2 x sides)
C.	Sealed glass panel.	1
D.	Wedge Gasket	1
E.	3/16" (5mm) Butyl frame/unit seal.	1
F.	3/16" (5mm) Butyl sealed glass panel seal.	1 (single sided exterior uses closed cell foam)
G.	Rubber, Sealed glass panel rests.	4
H.	Zinc coated, self-taping #8 x 1" screws.	1 pack



➤ Framing

Fireplace Placement Requirements:

- Fireplace must be installed on a level surface capable of supporting the fireplace and vent.
- Fireplace must be placed directly on wood or non-combustible surface (not on linoleum or carpet).
- Fireplace should be located out of traffic and away from furniture and draperies.
- Fireplace may be placed in a bedroom.

Clearances:

(a) Clearance to Sides of Fireplace: 0".

(b) Clearance to Back of Fireplace: 0".

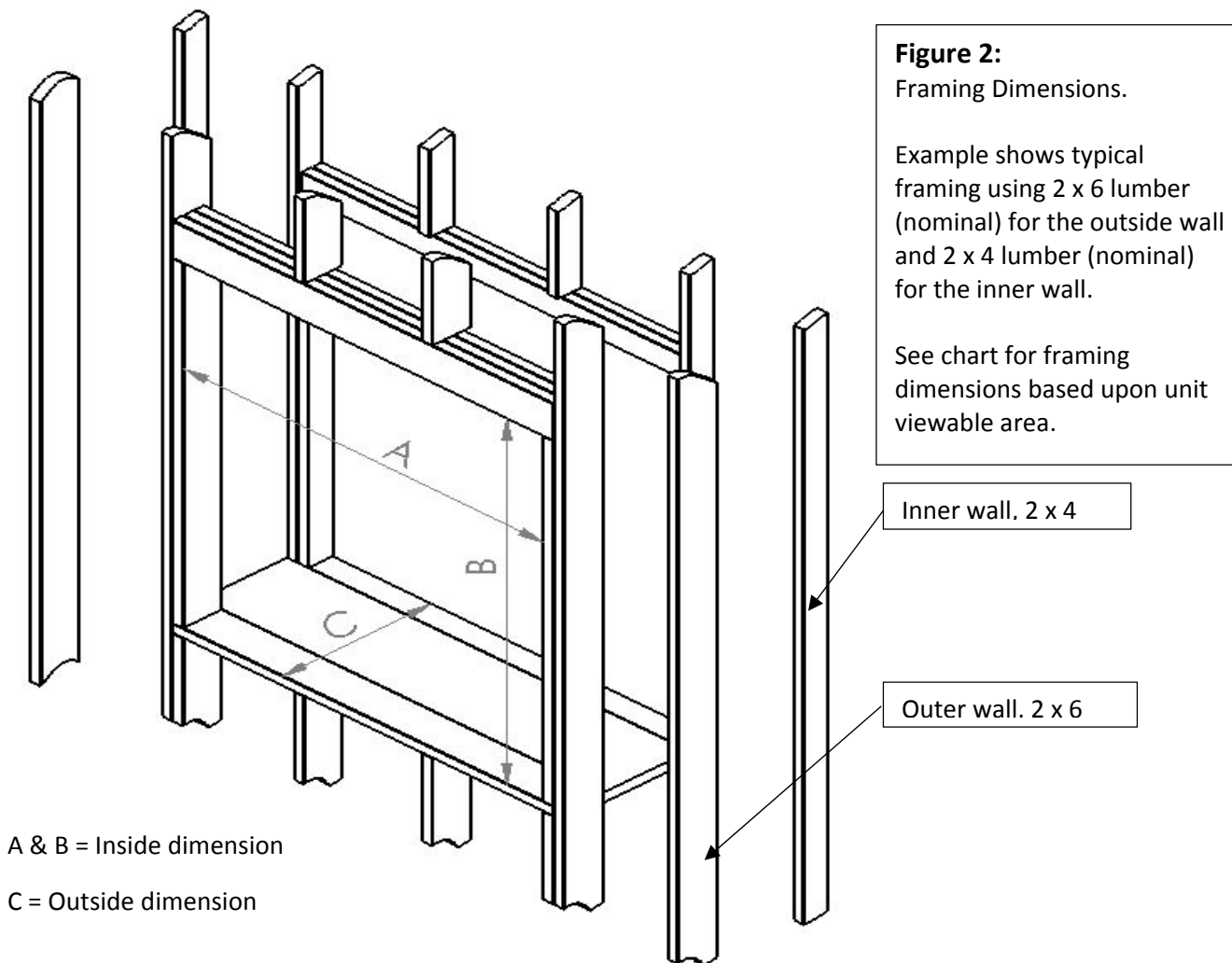
(c) Clearance to Front of Fireplace: 0". NOTE: do not cover the glass opening with any material.

NOTE: Side walls may be placed directly to the side of the fireplace.

(d) Clearance to Bottom of Fireplace: 0" (may be placed directly on subfloor).

Optional warm air blower:

See additional clearance instructions included with warm air circulation kit if installed.



Indoor / Outdoor Unit

Viewable area width	A (width)	B (Height=12")	B (Height=20")	B (Height=30")	B (Height=36")	C (depth)
36" 915mm	39" 991mm	50-5/8" 1286mm	58-5/8" 1490mm	68-5/8" 1744mm	74-5/8" 1896mm	21-1/8" 537mm
48" 1220mm	51" 1296mm					
60" 1524mm	63" 1601mm					
72" 1829mm	75" 1905mm					
84" 2134mm	87" 2210mm					
96" 2439mm	99" 2515mm					
108" 2744mm	111" 2820mm					
120" 3048mm	123" 3125mm					

➤ Fireplace Placement

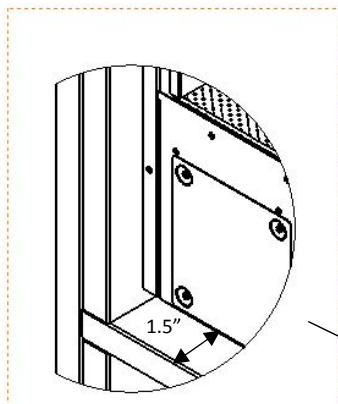
Note:

We strongly suggest framing around fireplace after it is in place.

Before lifting the unit in place, double check:

- Base is level
- Opening correct dimensions
- Base is able to take the weight
- Base is clear of any debris
- Controls are facing inside

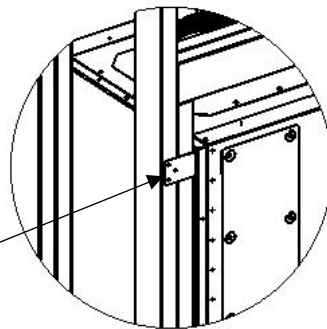
Outside view



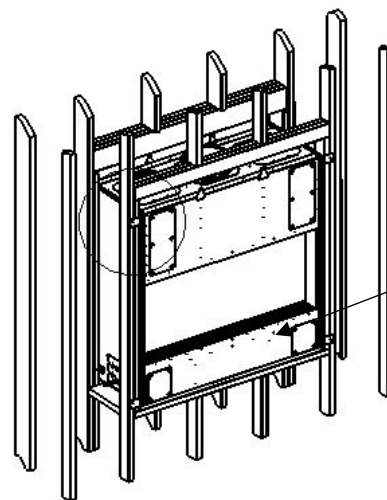
Distance from face of fireplace to outside of framing = 1.5" (39mm)

Base of Fireplace to Exterior Window = 12-1/2" (318mm) (11" 280mm if not using alignment track)

Inside view



Nailing flange should not be secured at this point



Control access face to inside

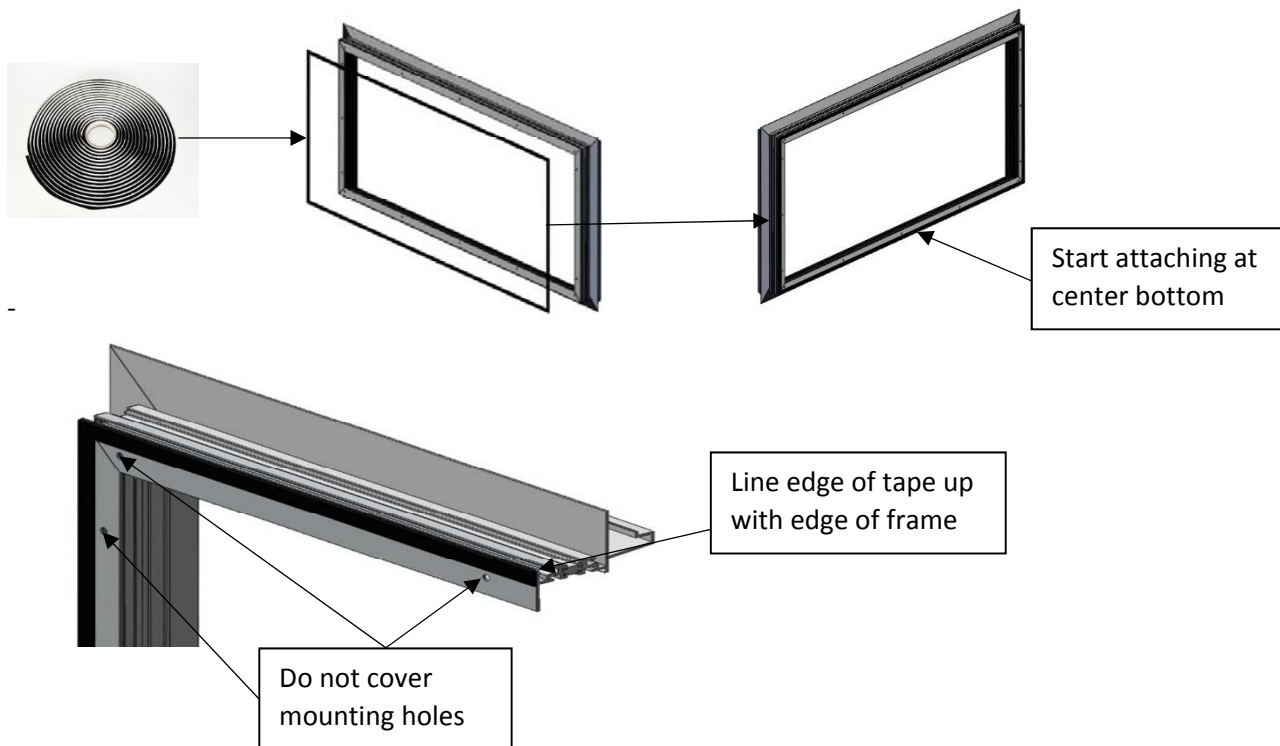
➤ Attach 3/16" (5mm) Butyl Seal

The 3/16" (5mm) butyl seal comes supplied on a roll. To attach the seal, start at the center bottom of the frame and attach, lining up the edge of the tape with the outside edge of the aluminum frame lip.

Note: We recommend you attach the butyl seal to the fireplace, not the window frame as shown below. The same directions apply, simply apply it around the perimeter of the window opening (1/16" (2mm) back from the opening).

Note: Make sure the butyl tape does not cover any of the mounting holes in the aluminum frame as this could cause damage to the seal by wrapping around the mounting screw during attachment.

Caution: Butyl tape is sticky and will adhere on contact, take care to attach in the correct position before applying.



Butyl seal attachment:

- Using denatured alcohol clean aluminum frame attachment area (avoid fingerprints).
- Start at bottom center of frame and applying light pressure, unroll the 1/16" (2mm) butyl tape to form a continuous seal (do not remove backing paper at this point).
- Check and make sure all mounting holes are clear.
- Press tape firmly into place.

Cold Climate tip:

If installing under cold conditions the butyl tape may become rigid and harder to handle. If this is the case warm the tape slightly with a heat gun (do not over heat). If the aluminum frame is cold it too will benefit from a slight warming to help the tape adhere.

➤ Attaching the Aluminum Frame to the Fireplace

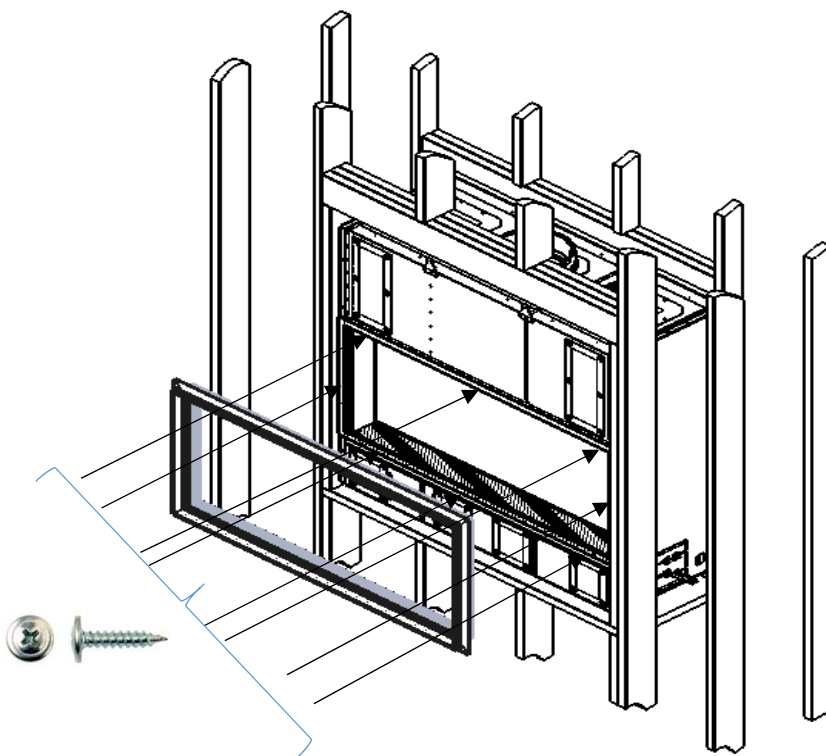
Attaching the aluminum frame to unit using the supplied zinc coated, self-taping #8 x 1" screws

Attach the aluminum frame to the unit using the supplied self-taping #8 screws.

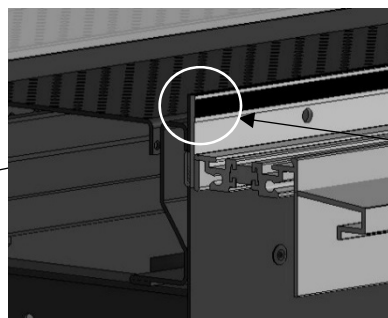
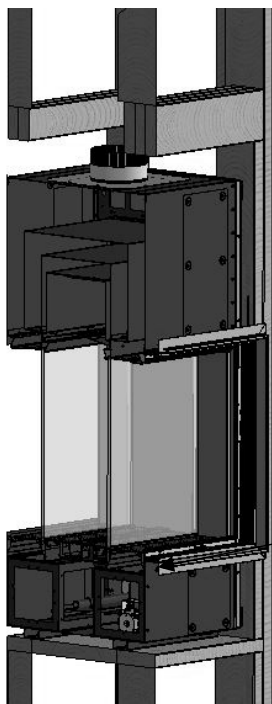
Remove the backing tape from 3/16" (5mm) Butyl tape.

Line up the inside edge of the frame with the inside edge of the unit (the opening size is the same for viewable unit area as the internal dimension of the aluminum frame).

Care should be taken to carefully align the frame to the unit as the butyl tape will adhere upon contact.



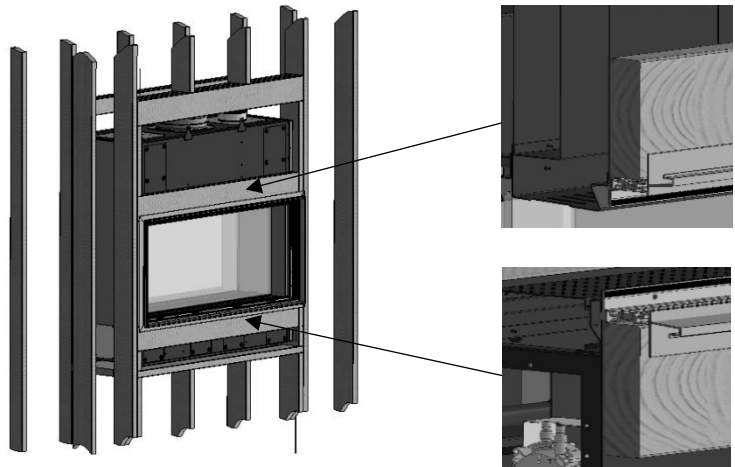
- Clean unit surface.
- Check alignment of aluminum frame before removing backing tape.
- Set drive on drill ratchet to avoid stripping the self-taping screws.
- Attach self-tap screws lightly at first, then tighten using hand screw driver.



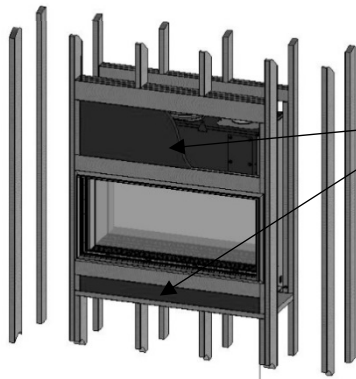
Line up edge of unit opening with inside edge of extrusion

➤ Front Cross Members

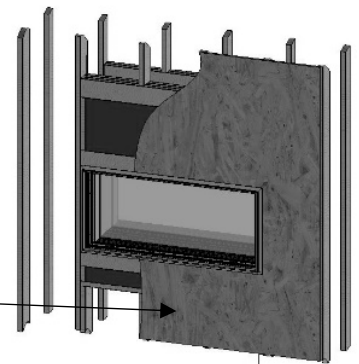
- Attach 2 x 6 cross members.
- Face of cross members should be flush to the side timber facing and tight against the unit face.
- Slot the cross members into the channel formed between the unit and the aluminum extrusion.



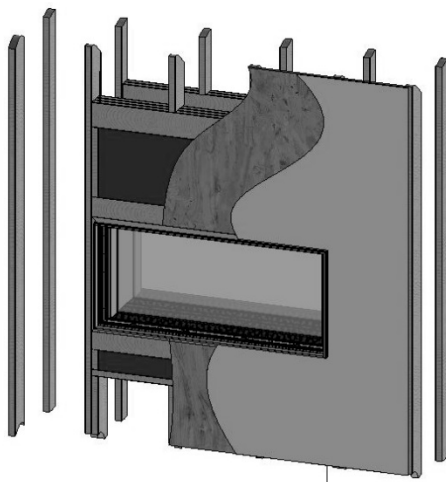
➤ Attach insulation, 3/8" (10mm) outer sheathing & vapour barrier



Attach 1-1/2" (39mm) rigid foam insulation (R value = 5.78R) into the cavities on the top and bottom face of the unit.

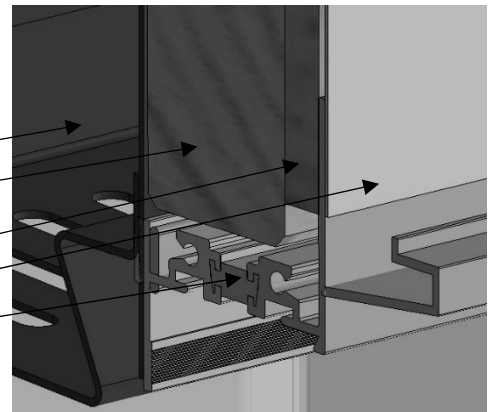


Attach 3/8" (10mm) outer sheathing. Typically 3/8" (10mm) particle board or similar sheathing fits in channel between extrusion and 2 x 6.

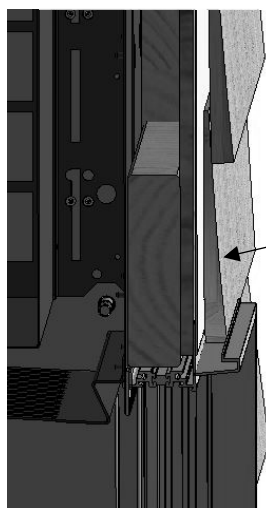


Attach vapour barrier to outer sheathing making sure to overlap the aluminum extrusion and seal with vapour barrier tape.

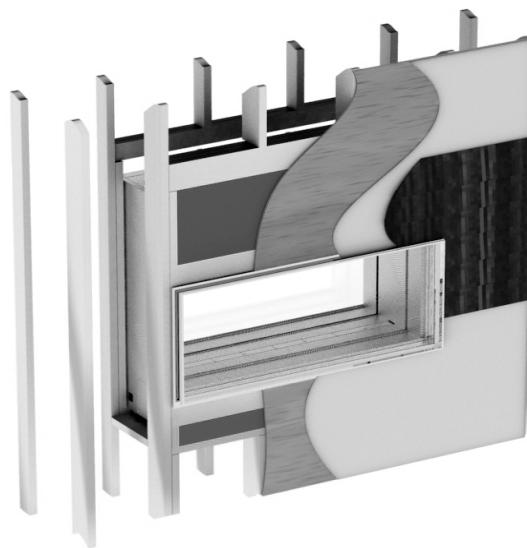
- Unit.
- 2 x 6.
- 3/8" (10mm) Sheathing.
- Vapour barrier
- Aluminum extrusion.



➤ Attach final finishing material



Attach final finishing (example shows cedar siding). This slots into the front channel of the extrusion.

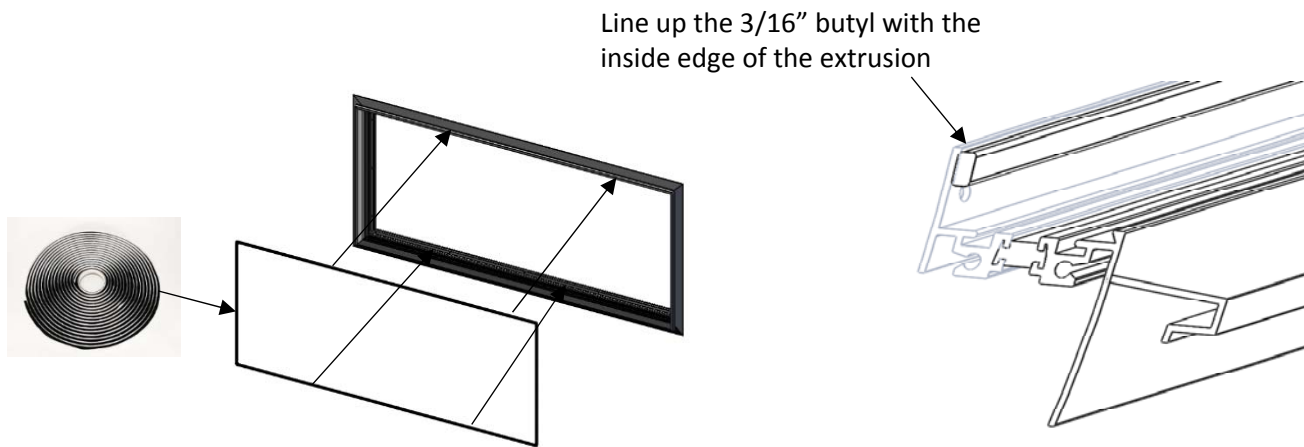


Part 2: Sealed Glass Panel Installation

Note: The glass panel may be installed into the aluminum frame at any time following completion of **Step 4**. It is understood that the required contractors may not be available to complete the outer wall finishing.

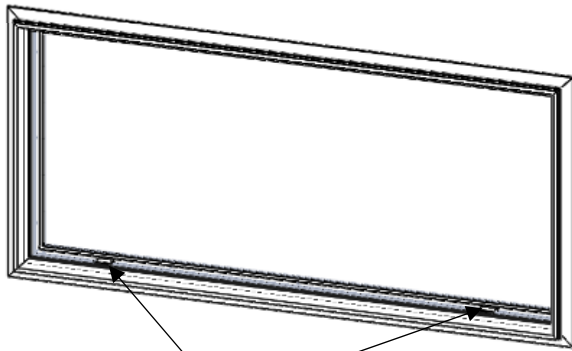
For clarity the process of installing the sealed glass frame is shown with the frame in view only, it is assumed the frame has been attached to the unit ready to receive the sealed glass panel.

➤ Attach 3/16" Butyl Seal



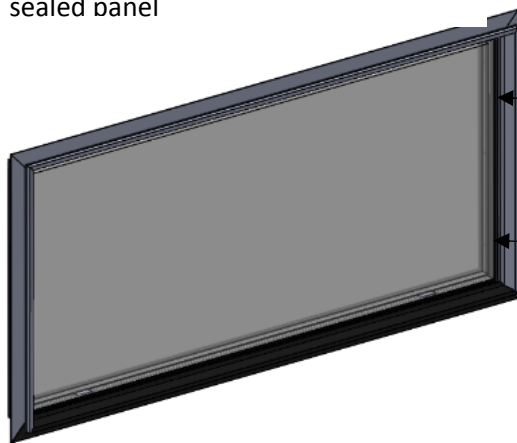
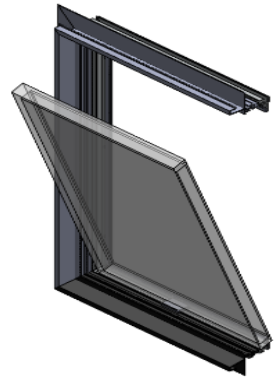
Apply 3/16" Butyl to aluminum extrusion, as with the 3/16" butyl start from the middle bottom and work round applying a firm even pressure.

➤ Attach Sealed Glass Panel



Place in the rubber block rests for the sealed panel

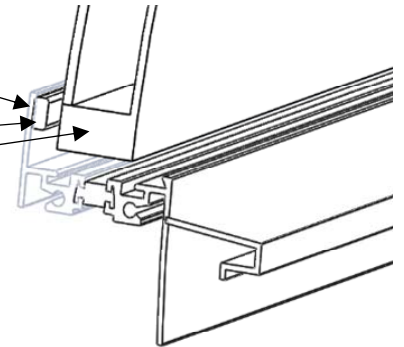
Lie the edge of the sealed glass panel on the rubber blocks.
Note: Avoid contact with butyl seal as you may damage it by dragging the seal.



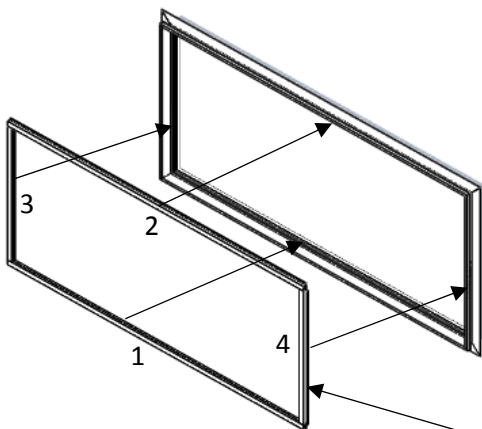
Aluminum extrusion
3/8" Butyl seal
Glass panel

Wedging tools

Push the sealed panel against the butyl rubber seal.
Use wedging tools to firmly locate the sealed panel in position.

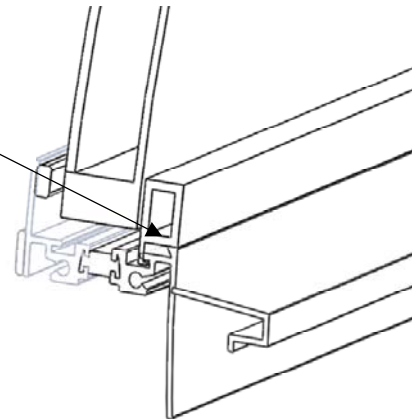


➤ Attach Sealed Glass Panel Retainers

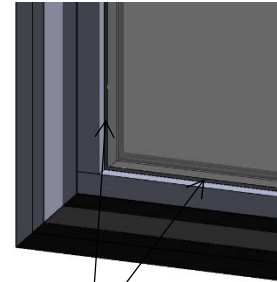
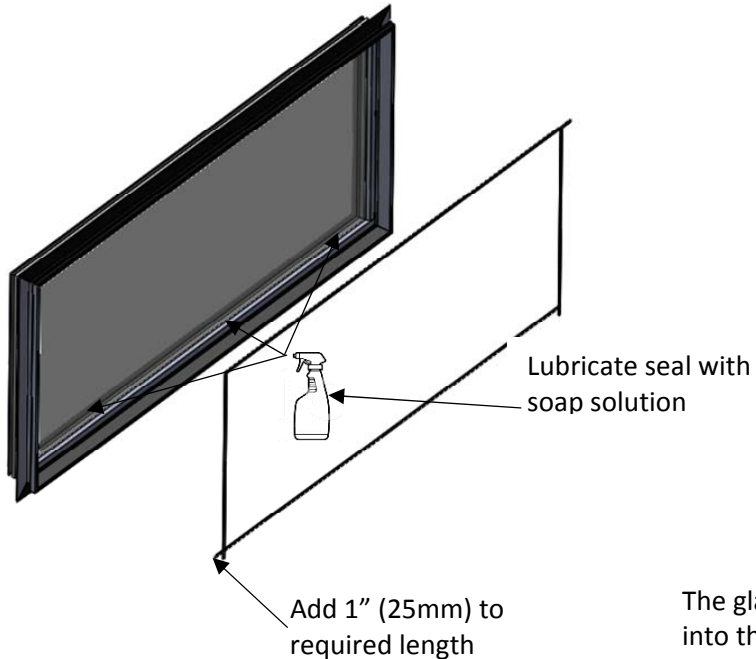


Locate retainers with tab facing down and located into slot between glass and extrusion.

Place in the glass panel retainers.
Note: For ease of installation they should be placed in the order shown



➤ Attach Wedge Gasket



Seal located in position between glass panel and retainer

The glass panel rubber retainer is placed pushed into the gap between the retainer and the glass panel.

The Rubber seal should be cut to length allowing for shrinkage over time. It is recommended that the rubber be cut 1" (25mm) longer than the required.

Install in the following order:

- Bottom.
- Top.
- Left & right sides.

The seal is a tight fit, to aid application it is recommended that a mild soap solution be spray around the area the seal is located.

Start from one end and compress the seal to allow for the 1" (25mm) oversize.

