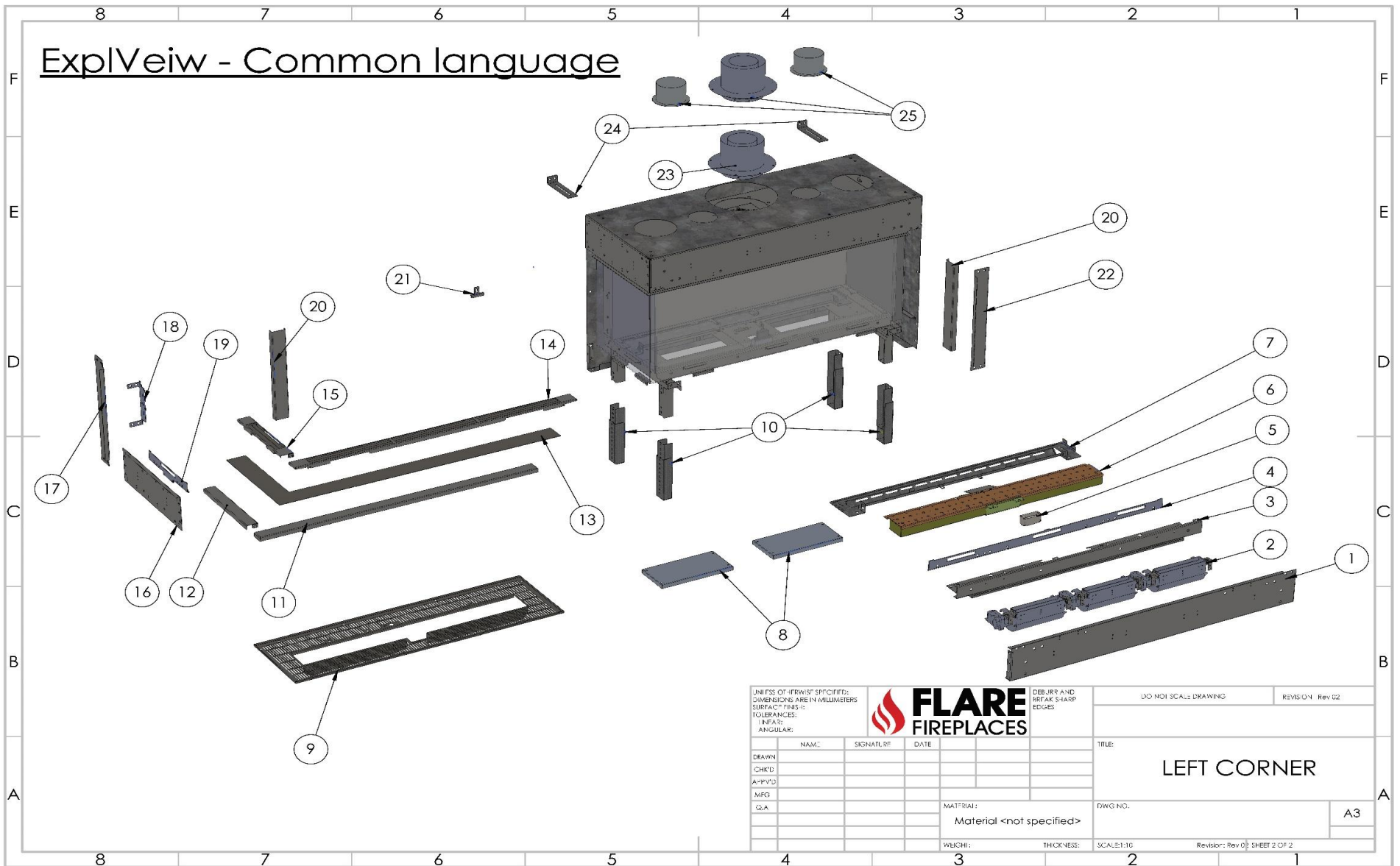


# FLARE FIREPLACES | LEFT CORNER PARTS VIEW

ExplView - Common language



UNLESS OTHERWISE SPECIFIED: DIMENSIONS ARE IN MILLIMETERS SURFACE FINISH: TOLERANCES: FINISH: ANGULAR:				DEBURR AND BREAK SHARP EDGES	DO NOT SCALE DRAWING	REVISION: Rev 02
DRAWN: CHECKED: APPROVED: MFG: Q.A.	NAME: SIGNATURE: DATE:	TITLE:  DWG NO.:				
MATERIAL: Material <not specified>			SCALE: 1:10		Revisor: Rev 02 SHEET 2 OF 2	A3

FLARE FIREPLACES | LEFT CORNER PARTS LIST

ITEM #	PART NUMBER	DESCRIPTION	SKU
1	CXXX-05-11	Bottom-Front Frame for Left Corner Fireplace	TXXX-05-11
2	Fan-Double Glass	8" Double Glass Fan(s)	8DGFAN
3	CXXX-11-11	Service Panel with LED strip	TXXX-04-11
	CXXX-11-11-W	Service Panel	TXXX-04-11-W
4	RDXXX-01-11	Butterfly Inner-Glass Gasket Rails <b>(Specify Top or Bottom)</b>	RDXXX-01-11
5	G-01-14	Low Profile Pilot Cover	G-01-14
6	BURNER-XX	Burner 14, Burner 21, Burner 31, Burner 40	BURNXX
7	CXXX-07-11	Holder With RGB LED Strips	CXXX-07-11
	CXXX-07-11-W	Holder Without RGB LED Strips	CXXX-07-11-W
8	TXXX-07	Pressure Valve - Down	TXXX-07
	TXXX-08	Pressure Valve - Up/In	TXXX-08
9	TXXX-06	Burner Tray	TXXX-06
10	G-08-09-11	Telescopic Legs for Corner Fireplaces	G-08-09-11
11	CXXX-10-11-S	Horizontal Filler Used on Screen Equipped Fireplaces.	CXXX-10-11-S
12	CXX-16-11-S	Left-Side Horizontal Filler Used on Screen Equipped Fireplaces.	CXX-16-11-S
13	TXXX-Filler-73	Screen Replacement Trim Filler <b>(DISCONTINUED)</b>	TXXX-Filler-73
14	CXXX-10-11	Horizontal Filler Used on Double Glass Equipped Fireplaces	CXXX-10-11
	CXXX-10-11-BK	Horizontal Filler Used on Blower Kit Equipped Fireplaces	
15	CXXX-16-11	Left-Side Horizontal Filler Used on Double Glass Equipped Fireplaces	CXXX-16-11
	CXXX-16-11-BK	Left-Side Horizontal Filler Used on Blower Kit Equipped Fireplaces	
16	C-04-11	Bottom Left-Side Frame for Left Corner Fireplace	T-04-11
17	C-10-11 OR C-10H-11	Vertical Left-Side Frame for Left Corner Fireplace	C-10-11 OR C-10H-11
18	G-29	Vertical Left-Side Rail Used to Secure Inner Glass to Fireplace Face	G-29
19	C-14-11	Horizontal Bottom Left-Side Rail Used to Secure Inner Glass to Fireplace Face	TXXX-14-11
20	C-11-11 OR C-11H-11	Vertical Left-Side Magnetic Filler Used Between Inner Glass and Safety Barrier to Provide Finished Look.	C-11-11 OR C-11H-11
	C-11-11 OR C-11H-11-N	Vertical Magnetic Filler Used Between Inner Glass and Safety Barrier to Provide Finished Look.	C-11-11 OR C-11H-11-N
21	G-22	Reflective Back Holder	G-22
22	C-30-11 OR C-30H-11	Vertical Front Right-Side Frame For Left Corner Fireplaces	C-30-11 OR C-30H-11
23	35CVS-AD-FL   46DVA-AD-FL   58DVA-AD-FL	Vent Adapter: 3x5, 4x6, 5x8	35CVS-AD-FL, 46DVA-AD-FL, 58DVA-AD-FL
24	G-02	Fireplace Stabilizer	G-02
25	SKCOVER-XX	Summer Kit Cover	SKCOVERXX

X REPRESENTS WHERE YOU'LL NEED TO SPECIFY GLASS HEIGHT, FIREPLACE LENGTH OR STYLE