

earthcore®

We Make Fire...Better.

earthcore.co

EcoSteel+ Insulated Chimney

THE LIGHTWEIGHT ECO-STEEL+

VENTING SOLUTION securely connects each insulated flue section using a locking-tab design, ensuring immediate and tight assembly. With a 12 5/8" inner diameter and a 15 5/8" outer diameter, it is rated for any solid fuel Isokern Fireplace. This versatile system has been tested and approved for use with Isokern Standard and Magnum fireplaces in typical OR Fire-Lite applications.



Insulated Chimney Flue - Stainless Steel

6" - 13INECO6
12" - 13INECO12
18" - 13INECO18
36" - 13INECO36
48" - 13INECO48



Insulated Anchor Plate - Stainless Steel

13INECOAP



Insulated Anchor Plate with Damper - Stainless Steel

13INECOAPD



Insulated 15° Offset - Stainless Steel

13INECO15OS



Insulated 30° Offset - Stainless Steel

13INECO30OS

For Both EcoSteel & EcoSteel+



Round Chimney Cap
Stainless Steel
13ACECOCC



Firestop Assembly
13ACECOFS



Support Band
4 pack
13ACECOSB



Chase Flashing
13ACECOFC



Attic Insulation Shield
13ACECOIS



Rain Cap
for Shroud Installation
13ACECORC



Tall Cone Flashing
13ACECOFT



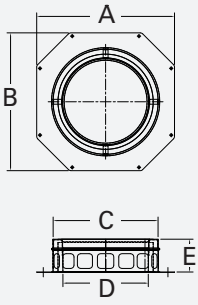
Storm Collar
13ACECOSC



Adjustable Support
13ACECOAS

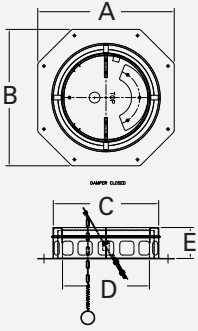


Wall Band
13ACECOWB



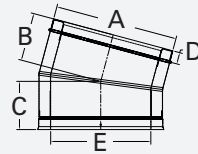
13INECOAP - Dimensions:

- A. 21.000
- B. 21.000
- C. 16.000 I.D.
- D. 13.000 I.D.
- E. 5.000



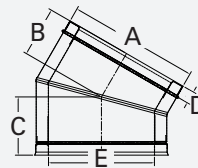
13INECOAPD - Dimensions:

- A. 21.000
- B. 21.000
- C. 16.000 I.D.
- D. 13.000 I.D.
- E. 5.000



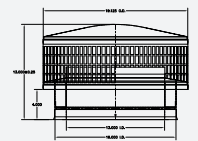
13INECO15OS - Dimensions:

- A. 16.000 I.D.
- B. 6.250
- C. 6.250
- D. 1.500
- E. 13.000 I.D.



13INECO30OS - Dimensions:

- A. 16.000 I.D.
- B. 6.148
- C. 7.148
- D. 1.500
- E. 13.000 I.D.



13ACECOCC - Dimensions:

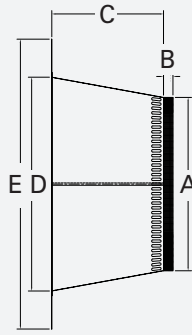
- A. 19.125 O.D.
- B. 13.000 ± 0.25
- C. 13.000 I.D.
- D. 4.000
- E. 16.000 I.D.

Stainless Steel



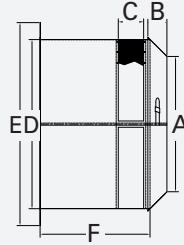
13INECOFC - Dimensions:

- A. 1.000
- B. 4.250
- C. 20.000 O.D.
- D. 26.250 Square



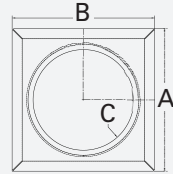
13ACECOFT - Dimensions:

- A. 18.250 O.D.
- B. 1.000
- C. 11.750
- D. 22.500 O.D.
- E. 30.500 Square



13ACECOIS - Dimensions:

- A. 16.000 I.D.
- B. 2.250
- C. 3.000
- D. 20.000 O.D.
- E. 24.000 Square
- F. 13.000



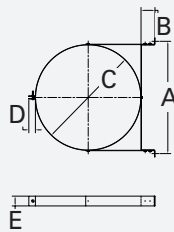
13ACECOFS - Dimensions:

- A. 23.188
- B. 23.188
- C. 16.375



13ACECOSC - Dimensions:

- A. 16.000 I.D.
- B. 45°
- C. 6.000



13ACECOWB - Dimensions:

- A. 17.125
- B. 2.000
- C. 16.036 I.D.
- D. 1.000
- E. 1.500

How It's Assembled:

