

earthcore[®]

We Make Fire...Better.

earthcore.co

EcoSteel Air-Cooled Chimney

THE LIGHTWEIGHT ECO-STEEL VENTING SOLUTION securely connects each flue section using a locking-tab design, ensuring immediate and tight assembly. With a 12 5/8" inner diameter and a 15 5/8" outer diameter, it is rated for any solid fuel Isokern Fireplace. This versatile system has been tested and approved for use with Isokern Standard and Magnum fireplaces in typical or Fire-Lite applications.



**Air-Cooled
Chimney Flue**

6" - 13ACECO6
12" - 13ACECO12
18" - 13ACECO18
36" - 13ACECO36
48" - 13ACECO48



**Air-Cooled
Anchor Plate**

13ACECOAP



**Air-Cooled Anchor
Plate with Damper**

13ACECOAPD



**Air-Cooled
15° Offset**

13ACECO150S



**Air-Cooled
30° Offset**

13ACECO300S

For Both EcoSteel & EcoSteel+



Round Chimney Cap
Stainless Steel
13ACECOCC



Firestop Assembly
13ACECOFS



Support Band
4 pack
13ACECOSB



Chase Flashing
13ACECOFC



Attic Insulation Shield
13ACECOIS



Rain Cap
for Shroud Installation
13ACECORC



Tall Cone Flashing
13ACECOFT



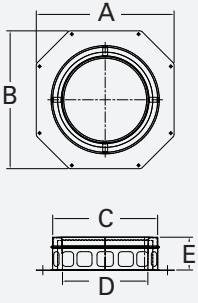
Storm Collar
13ACECOSC



Adjustable Support
13ACECOAS

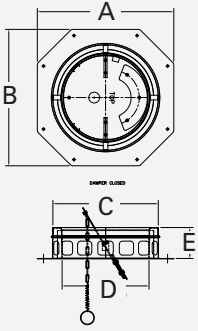


Wall Band
13ACECOWB



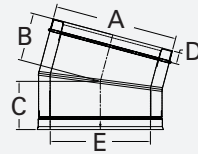
13ACECOAP - Dimensions:

- A. 21.000
- B. 21.000
- C. 16.000 I.D.
- D. 13.000 I.D.
- E. 5.000



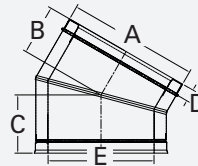
13ACECOAPD - Dimensions:

- A. 21.000
- B. 21.000
- C. 16.000 I.D.
- D. 13.000 I.D.
- E. 5.000



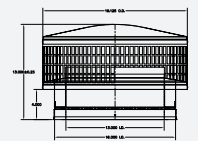
13ACECO15OS - Dimensions:

- A. 16.000 I.D.
- B. 6.250
- C. 6.250
- D. 1.500
- E. 13.000 I.D.



13ACECO30OS - Dimensions:

- A. 16.000 I.D.
- B. 6.148
- C. 7.148
- D. 1.500
- E. 13.000 I.D.



Stainless Steel

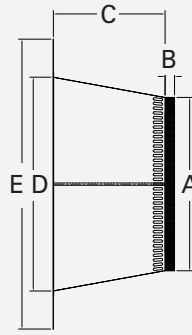
13ACECOCC - Dimensions:

- A. 19.125 O.D.
- B. 13.000 ± 0.25
- C. 13.000 I.D.
- D. 4.000
- E. 16.000 I.D.



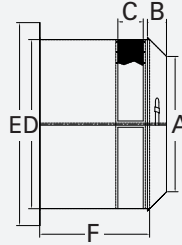
13ACECOFC - Dimensions:

- A. 1.000
- B. 4.250
- C. 20.000 O.D.
- D. 26.250 Square



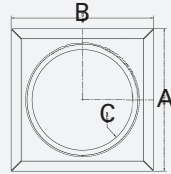
13ACECOFT - Dimensions:

- A. 18.250 O.D.
- B. 1.000
- C. 11.750
- D. 22.500 O.D.
- E. 30.500 Square



13ACECOIS - Dimensions:

- A. 16.000 I.D.
- B. 2.250
- C. 3.000
- D. 20.000 O.D.
- E. 24.000 Square
- F. 13.000



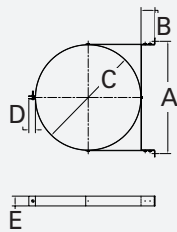
13ACECOFS - Dimensions:

- A. 23.188
- B. 23.188
- C. 16.375



13ACECOSC - Dimensions:

- A. 16.000 I.D.
- B. 45°
- C. 6.000



13ACECOWB - Dimensions:

- A. 17.125
- B. 2.000
- C. 16.036 I.D.
- D. 1.000
- E. 1.500

How It's Assembled:

