



User's Manual & Safety Instructions Read Carefully Before Use

Buyer assumes all responsibility for safety and use that is not in accordance with User's Manual & Instructions. To insure your safety and enjoyment this User's Manual & Safety Instructions were created to provide the guidance for correct use of the product. It is solely the consumer's responsibility to obtain proper instruction from manual. Please always act safely, wisely and with caution while using our products.

Read and Understand the entire Manual before use. Keep Manual for future Reference.

Assembling

Unpack the fireplace and accessories. Check the content for completeness and any damages incurred in transit. Keep children and animals away from the packaging.

Free standing/table styled fireplace

The fireplace must only be installed on a solid, flat, and stable surface of non-flammable material

1. Fully assemble the fireplaces according to the extra assemble instructions
2. Put wind screen panels inside the cutouts of the base.

User's Manual & Safety Instructions

3. Place the burner into the burning chamber of the fireplace body.
4. Make sure all dirt and packing debris is removed.



WARNING!

DO NOT REFILL BURNER OR CUP UNTIL FLAME IS OUT AND BURNER OR CUP IS COOL
SERIOUS INJURY MAY OCCUR

DO NOT TOUCH BURNER WHEN HOT
DO NOT BURN NEAR FLAMMABLE ITEMS
KEEP AWAY FROM CHILDREN AND PETS

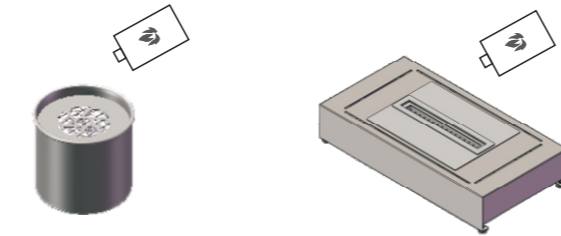
READ AND UNDERSTAND CARE USER'S MANUAL
& SAFETY INSTRUCTIONS



Direction for Use

Your fireplace is for decorative purpose only and not suitable for continuous operation. Do not use the fire to heat or boil water or as a cooking appliance. Do not put charcoal, paper, wood or other combustible objects into the fire.

Step 1: Remove the extinguish cover from burner. Make sure the burner is clean and free of dirt or packing debris. Fill the burner with the approved bio ethanol; watch carefully till you reach under the level of the "Max" line. Do not overfill or spill. The burner should be no more than 2/3 full.



2

User's Manual & Safety Instructions

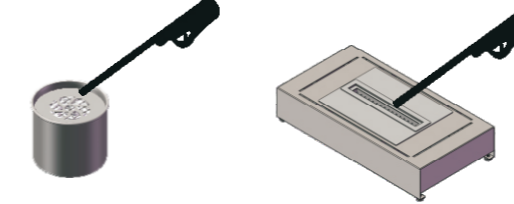
CAUTION:

Please ensure your pebbles or logos are not covering the opening in case of accidental spillage.

Any spilled ethanol must be immediately removed with an absorbent tissue and cleaned with water to prevent ignition outside the burner reservoir.

Fuel must be kept in safe distance (min. 1 m/40 inch) to the fireplace. Do not place fuel in front of the fireplace.

Step 2: Use a long match or a long-end lighter to ignite. When igniting, keep a safe distance at arm's length.



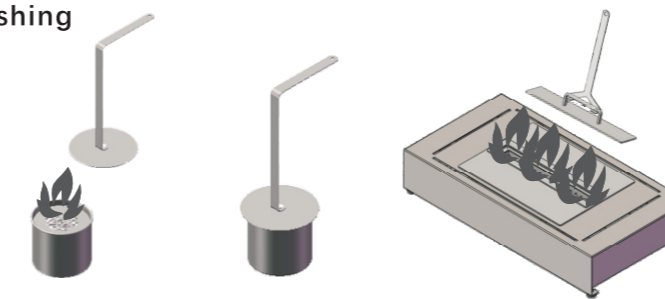
CAUTION:

Fuel will burn low at first. Please allow 10-15 minutes to reach the optimum temperature and flame height.

Avoid drafts for long burning time.

Always maintain a safe distance of at least 1 meter (40in) from the fireplace when the flame is lit.

Extinguishing



CAUTION: Never extinguish the flame with water!

3

User's Manual & Safety Instructions

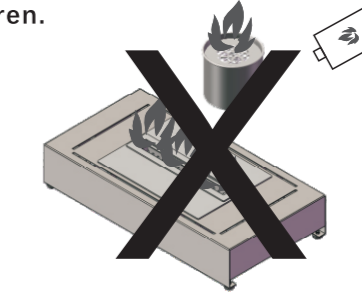
1. Let the fuel burn out completely if possible. This prevents alcohol left in the burner and deflagration when reigniting.
2. If you wish to extinguish the fire before the fuel has completely burned out. Please use the extinguish cover to fully cover the burner hole in a fast motion, completely extinguish the flame.
3. In case the flame is not extinguished immediately. Repeat the above instructions until the flame is fully extinguished.
4. **Do not** touch the fireplace while burning. Please allow at least 15 minutes to cool down before touching the fireplace after flame is extinguished.
5. It is urgently recommended that you keep a Class B fire extinguisher at hand close to the device in case of fire.

Refilling

Allow the burner to cool down for at least 15 minutes before refilling.

Warning: Never refill the burner when the fireplace is operating or still hot.

Never pour fuel into the burning flame. Never leave a burning or hot fireplace unattended. Keep away from children and pets; this is not intended from children.



SAFETY INSTRUCTION/ WARNING

1. When burning ethanol, water-vapor and carbon dioxide are produced.
2. **Never** leave an open fire unattended at any time!
3. **Never** open a fuel bottle near an open flame. A dangerous fire flash could result
4. **Do not** use for cooking surfaces.
5. **Never** attempt to move the fireplace while it is burning or still hot.

4

User's Manual & Safety Instructions

6. In a house of typical construction, that is, one that is not of unusually tight construction due to heavy insulation and tight seals against air infiltration, an adequate supply of air for combustion and ventilation is provided through infiltration. The fireplace should not be used in a small room where less than 44m³ (1550ft³) of air space is provided for each 1000 Btu per hour of fireplace (considering the maximum burner adjustment).
7. Do not use the fireplace in a bathroom, a room where sleeping accommodation is provided or any other small room.

Cleaning and Care

Never clean when the fireplace is operating or still hot.

1. **Fuel:** Any spilt fuel may erode or stain flooring and/or furniture. Clean up any spills immediately with a dry cloth. Then take water dampened cloth and clean the area. Allow recently cleaned area to dry before using. Dispose of any bio ethanol fuel content and empty containers in safe manner that is within local regulations for hazardous materials.
2. **Exterior:** Use a damp cloth to clean the exterior or body of your fireplace.
3. **Glass:** Use glass cleaner and paper towel to clean the glass. Wipe dry to avoid residue.
4. **Burner:** Marks can be best removed with a soft cloth and a mixture of lukewarm water and a small amount of cleaning liquid. We recommend cleaning the stainless steel items regularly to prevent contamination.

CAUTION:

Never use chemical, steel-wool or scrubbing sponges to clean the fireplace. These can scratch the surface. The manufacturer cannot be held responsible for any damages resulting out of false use and/ or cleaning of the products.

5

User's Manual & Safety Instructions

CAUTION:

1. Fireplace and burner get hot while in operation. **Do not** touch the fireplace while burning. Please allow at least 15 minutes to cool down before touching the product after flame is extinguished.
2. **Risk of burns.** Do not operate the ethanol fireplace without completed assembly.
3. **Never** pour fuel into an open flame or into the burner reservoir unless it has cooled down for at least 15 minutes after used.
4. **Do not** place any flammable material within 1 meter/ 40 inches around the fireplace. A safety distance of at least 2 meters/80 inches should be kept from any window or curtain.
5. **Do not** burn under over hanging items.
6. **Do not** smoke while handling the fuel.
7. **Avoid** airflow in the room where the fireplace is operated.

WARNING:

1. Risk of Explosion
 - i. **Never** use any fuel other than approved Bio Ethanol. **Never** use gasoline.
 - ii. **Never** use the appliance in areas where flammable vapors or gas may be present.
 - iii. **Never** store or transport the fuel in other than a metal or plastic container that is acceptable for use with the specified fuel in accordance with the Consumer Chemicals and Containers Regulations 2001 and is the original container for the specified fuel.
 - iv. **Never** store fuel in the living space or in the same location as the appliance.
2. **Do not** use the appliance to heat or boil water or use as a cooking appliance.
3. Due to high surface temperatures, keep children, clothing, and furniture away.

6

User's Manual & Safety Instructions

4. Risk of Indoor Air Pollution—Use ethanol fireplace only in well-ventilated areas and with doors of adjacent room open. Do not obstruct air flow to the burner by piling logs over the burner, but only around it and do not obstruct the burner in any other way or with any other material. People with breathing problems should consult a physician before using the ethanol fireplace.
5. **THIS APPLIANCE HAS NOT BEEN TESTED WITH DOORS OR AN UNVENTED GAS LOG SET. TO REDUCE RISK OF FIRE OR INJURY, DO NOT INSTALL DOORS OR AN UNVENTED GAS LOG SET INTO THIS APPLIANCE.**
6. **IN CASE OF EMERGENCY DIAL 911. EXTINGUISH FIRE WITH APPROVED FIRE EXTINGUISHER.**

Warranty:

1. Our fireplaces are guaranteed 1 year, parts and labor. Warranty begins on the date of purchase.
2. Warranty will be applied on presentation of a dated cash receipt and is strictly limited to factory service repair of the piece or pieces that are found to be defective.
3. Installations costs will not be reimbursed in any case as damages for any reason whatsoever.
4. Manufacturer will not be held responsible for any incidental or consequential defects, on goods or individuals.
5. The warranty will not be applied if devices have been subjected to abnormal use or if used under other conditions of use than the ones they were intended for.
6. The warranty will not apply in case of deterioration or accident due to negligence, damages caused by failing to maintain and service the device or resulting from an alteration of material.

7