



Hearth Products Controls Co  
www.HPCfire.com

## Water Basin Insert With Fire Feature Option For Outdoor Use Only

If your system includes an HPC fire feature you must comply with the instructions included for the fire feature.

Any system utilizing any fire affect is for outdoor use only and must comply with HPC clearance and installation instructions for a fire feature. If you are unsure of what these clearances and instructions are they are outlined in our fire pit instructions which are available on our website or you can contact your dealer.



### Installation

We suggest that our fire products be installed by professionals that are locally licensed by the authority having jurisdiction in gas piping.

### Service



We suggest that our fire products be serviced by a professional certified in the US by the National Fireplace Institute (NFI) as NFI Gas Specialists.

**⚠ WARNING: FOR OUTDOOR USE ONLY**

**⚠ WARNING**  
•Improper installation, adjustment, alteration, service, or maintenance can cause injury or property damage. Read the installation, operating, and maintenance instructions thoroughly before installing or servicing this equipment.

**INSTALLER:** Leave this manual with the appliance.  
**CONSUMER:** Retain this manual for future reference.

# Index:

- 1) General Information
- 2) Selecting the Location and Site Preparation
- 3) Construction Of The Enclosure
- 4) Installation Of the Water Feature
- 5) Media

## Product Specific Information

- 6) Parts List
- 7) Water Basin Operation
- 8) Maintenance
- 9) Troubleshooting
- 10) Replacement Parts
- 11) Warranty
- 12) Clearances

## 1) General Information

Instructions are also available at [HPCfire.com](http://HPCfire.com)

Please carefully follow the instructions in this manual to prevent personal injury or property loss. Instructions are updated as needed. It is the installer's responsibility to periodically review instructions for applicable updates.

The steps listed as:

**WARNINGS:** Contains information critical to the safe installation and operation of the Fire and Water.

**WARRANTY REQUIREMENT:** Must be strictly followed to qualify for product warranty. Warranty will be void if not followed.

**IMPORTANT:** Are notes and insights to help ensure product satisfaction and serviceability.

---

**WARNING:** It is the installer's responsibility to ensure a safe installation and to educate the end user as to proper operation. Leave this manual with the end user.

**WARNING:** Never alter product or configuration in any way.

**WARNING:** FOR REMOTE CONTROL USE: For Electronic Ignition Fire Pit Models to prevent accidental start-up from unwanted RF signals it is the responsibility of the end user to turn off power to electric outlet for the remote control receiver when the fire pit is not in use via wall switch or breaker.

**WARNING:** It is the responsibility of the installer to follow ALL LOCAL CODES concerning the installation and operation of both the fire pit and water basin. In the absence of local codes, please follow:

- Fixed piping system: The *National Fuel Gas Code, ANSI Z223.1/NFPA 54* or *International Fuel Gas Code*.

- Electrical ground: The *National Electrical Code, ANSI/NFPA 70*.

**WARNING:** For units with the fire feature option only use gas/fuel type specified for this fire pit see label on the fire pit control Box. Verify correct gas/fuel type and pressure. Never use an alternative fuel to include bio-fuel, ethanol, lighter fluid or any other fuel.

Gas pressure and type should be checked prior to use and installation.

- Natural Gas Fire Pit:

- Supply Pressure: Minimum: 3.5" W.C.; Maximum: 7.0" W.C.

- Outlet Pressure: 3.5" W.C.

- LP Gas Fire Pit:

- Supply Pressure: Minimum: 8.0" W.C.; Maximum: 11.0" W.C.

- Outlet Pressure: 10.0" W.C.

**WARRANTY REQUIREMENT:** Water Basin Tower weight limit is 100 lbs. maximum.

**WARRANTY REQUIREMENT:** Water Basin media weight limitation is 400 lbs. maximum evenly distributed.

## 2) Selecting The Location & Site Preparation

**WARNING:** Using this water basin with any kind of fire feature is for outdoor use only and must comply with the correct HPC fire pit instructions and clearances.

**WARNING:** The water basin must be supplied power via GFI protected circuits.

**WARNING:** For a water basin with the fire option refer to the correct fire pit installation instructions.

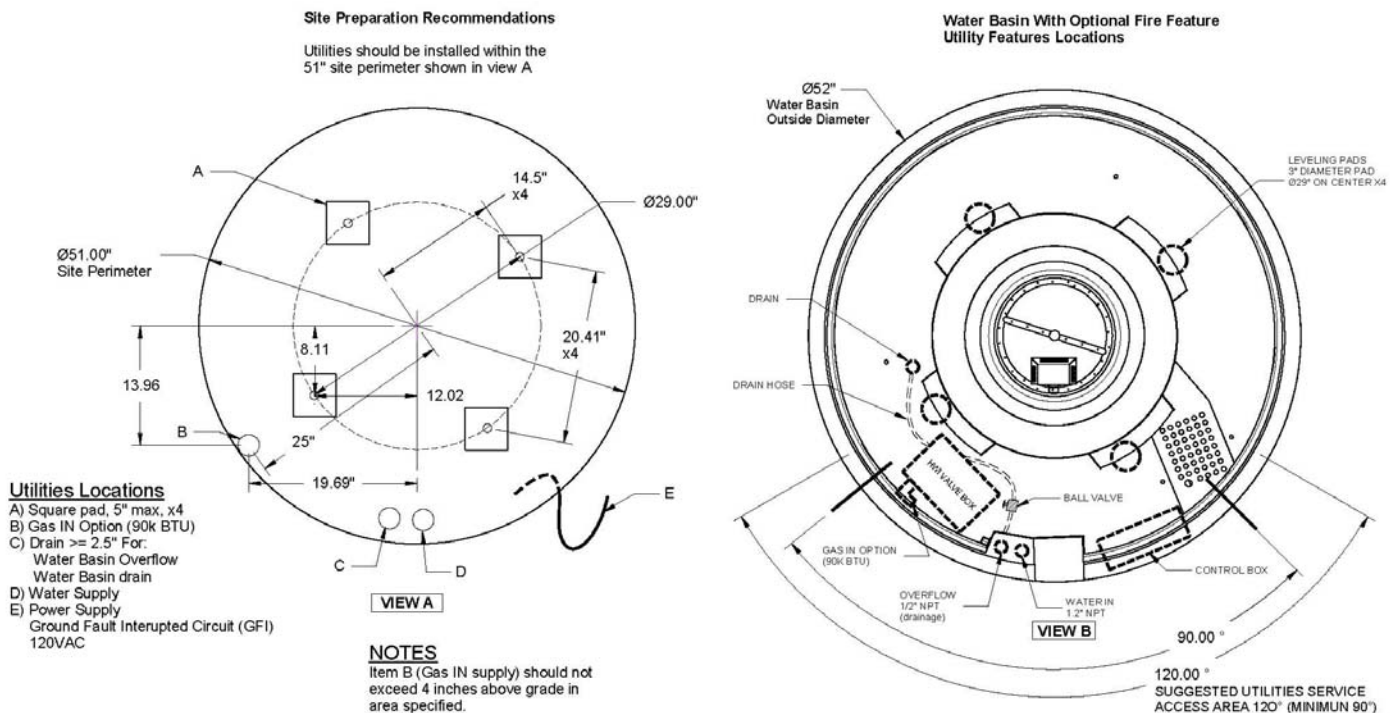
**WARRANTY REQUIREMENT:** The water basin must be properly drained and winterized in areas that drop below freezing temperatures. (Section 8)

**WARRANTY REQUIREMENT:** Your location must have sufficient drainage to prevent damage to surrounding surfaces. HPC does not warranty against drips or leaks and is not responsible for any damage. It is the installer's responsibility to ensure there is enough drainage to allow for maintenance, repair, winterization or leak of the water basin.

**IMPORTANT:** Choose a location that allows easy access for installation and maintenance of the water basin.

<u>Clearances</u>
Refer to Clearance drawings at the end of this document
Valve Box must be above grade
Electrical Control box must be above grade
For Outdoor Use Only

### SITE PREPARATION RECOMMENDATIONS WATER BASIN INSERT WITH FIRE FEATURE OPTION



## 3) Construction Of The Enclosure

**WARNING:** For a water basin with the fire option follow the correct fire pit instructions.

**WARNING:** The water basin must be supplied power via GFI protected circuits

**WARRANTY REQUIREMENT:** The enclosure must be constructed on a stable surface.

**WARRANTY REQUIREMENT:** The weight of the water basin must be supported by the adjustable legs and not by any other portion of the basin.

**WARRANTY REQUIREMENT:** Make sure that the water basin is high enough that the electrical control box and optional fire pit valve box is above grade to prevent water damage to the controls inside the box.

**WARRANTY REQUIREMENT:** Your location must have sufficient drainage to prevent damage to surrounding surfaces. HPC does not warranty against drips or leaks and is not responsible for any damage. It is the installer's responsibility to ensure there is enough drainage to allow for maintenance, repair winterization or leak of the water basin.

**WARRANTY REQUIREMENT:** Do not rest or hang the enclosure on the water basin. The enclosure should be free standing.

**IMPORTANT:** Make sure that the enclosure structure is level.

**Installation**

We suggest that our fire products be installed by professionals that are locally licensed by the authority having jurisdiction in gas piping.

## 4) Installation Of The Water Feature

**WARNING:** Do not adjust legs out past 6.25 inches or the water basin may collapse. (Figure 7)

**WARRANTY REQUIREMENT:** The water feature should be supported by adjustable legs when placed into enclosure.

**WARRANTY REQUIREMENT:** Soft water is recommended. Hard water may cause premature failure of components and the pump.

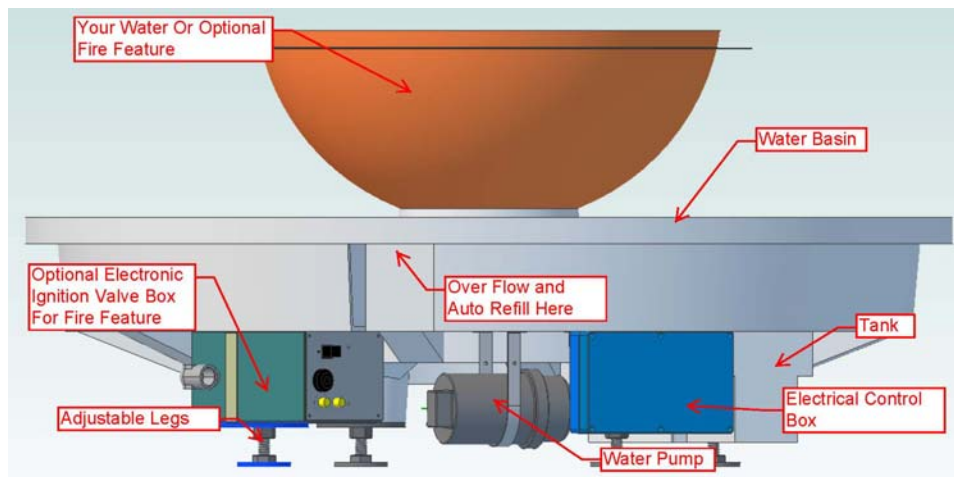
**WARRANTY REQUIREMENT:** Never lift the unit by the top water or fire bowl, tower, or ring. This will damage these parts.

**WARRANTY REQUIREMENT:** Ensure the water basin is able to be removed for regular service and maintenance. Never permanently mount in a way that it cannot be removed.

**WARRANTY REQUIREMENT:** Water basin tower weight limit is 100lbs maximum.

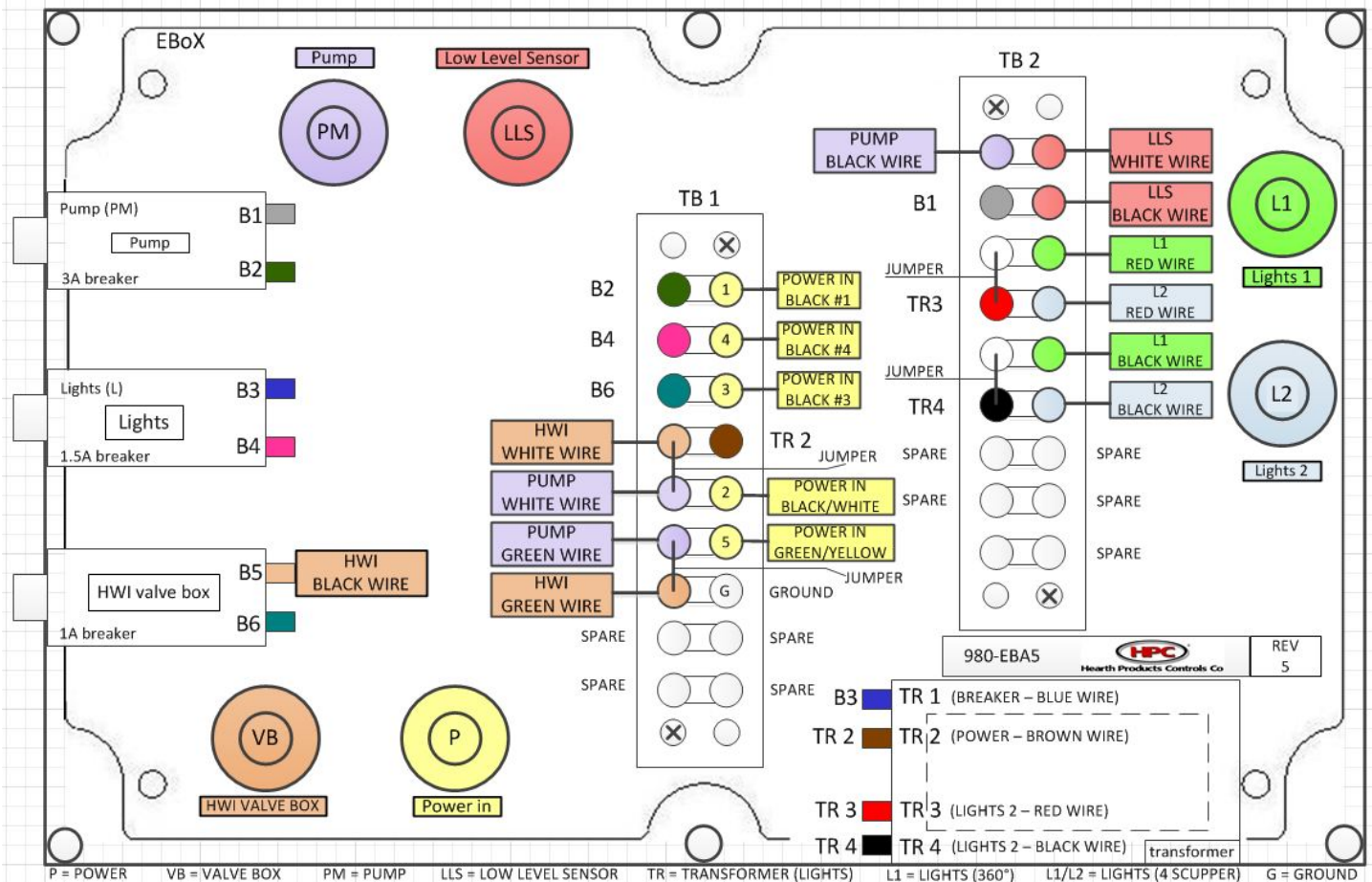
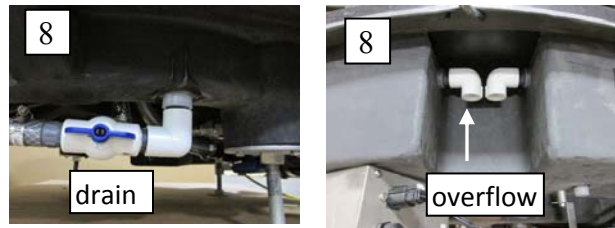
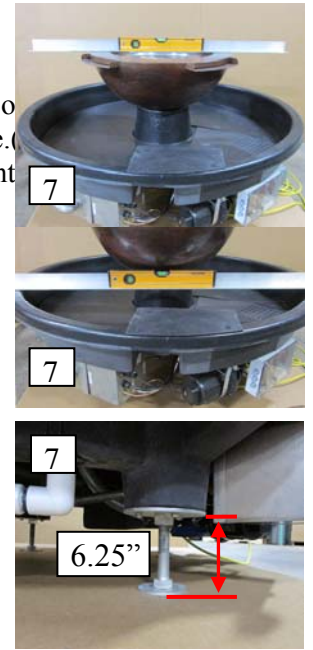
**WARRANTY REQUIREMENT:** Water basin media weight limitation is 400 lbs. maximum evenly distributed.

**WARRANTY REQUIREMENT:** Do not exceed 70 psi on your water supply. This may damage the auto fill mechanism.

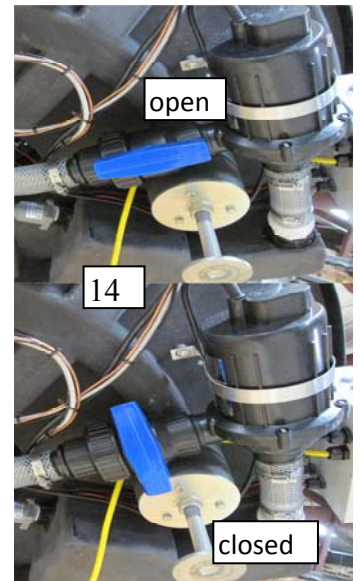
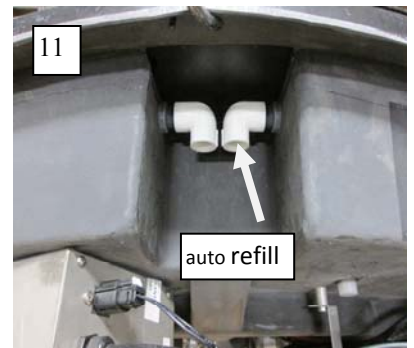


1. Position the control panel and pump so they can be accessed in the future.
2. Prepare the site.
  - a. Make sure the area is stable and level.
  - b. Ensure adequate drainage to allow for periodic maintenance and winterization that will not result in damage to the surrounding area.
  - c. Ensure electric is run to site on GFI circuit and complies with all codes by the authority having jurisdiction.
  - d. For fire option ensure there is correct gas type, plumbed to site, of sufficient BTU, install by a certified installer and inspected by the authority having jurisdiction. Refer to the correct fire pit instructions.
3. Uncrate your water basin being careful not to damage the unit.
  - a. Clean the basin all debris left from the shipping crate.
4. Inspect your water basin for any visual damage or defect.
5. Set water basin in place. This will require at least 2 people.

6. Mount your water feature to the basin tower when applicable with 1/4-20 mounting bolt.
  - a. Do not exceed weight limitations.
  - b. Do not torque over 5 ft./lbs.
7. Level your water feature using the adjustable legs.
  - a. The adjustable legs may also be used for minor height adjustments. Do not adjust from the bottom of the flange to the bottom of the foot or the feature may collapse.
  - b. Make major height adjustments with block that is larger than the feet and sufficient not risk the unit will fall.
  - c. Adjust the basin to level condition first.
  - d. After the basin is level check the water feature for level.
    - i. If your water feature is made of copper it may be possible to make some leveling adjustment by carefully adjusting the bowl itself.
    - ii. If it is not possible to adjust the water feature then make the water feature level adjustments using the adjustable legs.
8. Hook up the basin drain and the overflow drain to the onsite drainage system. (Figure 8)
  - a. Your system will require regular service and or winterization.
  - b. Include a shutoff valve for the basin drain that is convenient to access.



9. Hook up electrical cord to GFI electrical supply following the wire diagram.
  - a. Your system can be wired so that one switch controls multiple functions or each function is controlled independently.
  - b. Refer to the wire labels on the 20 ft. 5 conductor power cord.
    - i. #1 = Pump (Water) - minimum 2.0 amp 120 VAC
    - ii. #4 = Lights – minimum 0.5 amp 120 VAC
    - iii. #3 = HWI Valve Box (Optional Fire Feature) – minimum 1.0 amp 120 VAC
10. Turn on lights to ensure they work properly.
11. Hook up water to auto refill. (Figure 11)
  - a. Take care not to twist the refill float or damage the unit by over torquing.
  - b. Use plumber tape or appropriate sealer for PVC.
12. Hook up gas supply for water basins with the fire option.
  - a. Follow all fire pit instructions provided in the fire pit instruction.
  - b. Use appropriate gas rated sealer.
  - c. Do not use any sealers on flare fittings.
  - d. Ensure all fittings are leak tested with leak reactor or gas detector.
13. Fill your water basin with water ½ full.
  - a. Recommended to fill with external water source watching for leaks as the basin fills.
  - b. HPC does not warranty against minor leaks. Your water feature has been assembled and thoroughly inspected prior to shipping. There are many connections and in some cases handmade water features.
  - c. Repair leaks as necessary.
14. Once your feature is ½ full turn on the water feature and make any necessary adjustments.
  - a. Adjust the uniformity of your water feature using the leveling feet.
  - b. Adjust the flow of your feature using the ball valve provided.
    - i. It is recommended to not close off the ball valve more than ¼ turn. This may reduce the life of the water pump.
15. Turn on the water supply to the water basin.
  - a. Allow the auto fill to finish filling the water basin.
  - b. Check the refill system for leaks and repair as needed.
  - c. Ensure the refill system turns off the water about 1 to 1.5” below the top of the basin.
16. Turn on the optional fire feature if applicable.
17. Finish your project as desired keeping in mind accessibility for maintenance and winterization.



## 5) Media

**WARNING:** For optional fire pit follow the correct fire pit instructions.

**WARNING:** Media for the water feature is NOT suitable to use as media for the optional fire feature. Use only approved media intended for use with fire appliances. Failure to follow may result in your media exploding.

**WARNING:** For water basin do not exceed a total weight of 400 lbs. maximum of media in your water basin evenly distributed.

**WARRANTY REQUIREMENT:** It is recommended to rinse your media thoroughly before putting it in your water basin. Your basin is equipped with a coarse filter for large debris only. Thoroughly cleaning your media will help keep your water clean and reduce silt build up in your system.

**WARRANTY REQUIREMENT:** Do not use media in the water feature less than ½” in size. This may damage the water pump.

Your water basin is designed to have media installed on top of the basin liner. One layer of rock or stone is recommended. As shown.

## 6) Parts

- a. Water Basin
- b. Optional Water Bowl
- c. Optional Fire Feature
- d. Instructions

## 7) Operation

**WARNING:** If your feature includes a fire feature follow all procedures included with your fire pit.

**WARNING:** When not in use turn off power supply, water supply and fuel supply when applicable to the unit.

**WARNING:** Water temperature may be elevated in some configurations.

**WARNING:** Leaves, sticks, wood, paper, clothing, food etc. should always be kept away from the water feature.

### START UP

1. **STOP! Read the safety information on “What to Do If Smell Gas” (Pg. 1 of Fire Pit Instructions When Applicable).**
2. Confirm there is no debris in the water basin, water feature or optional fire pit (as mentioned in warnings).
3. Turn “ON” main electrical power, water and optional gas to the water basin.
4. Ensure system is full of water.
5. Turn on water as desired.
6. Turn on lights as desired.
7. Turn on fire when applicable as desired.

Note: a. Some configurations may require water to be on before the optional fire feature will light.  
b. If your unit has the optional fire feature do not leave unattended.

### SHUT DOWN

1. Turn off Water.
2. Turn off Lights.
3. Turn off Fire when applicable.
4. Turn off Electrical supply, Water supply and Fuel supply for units with the optional fire feature.
5. Cover water basin and fire pit.

## 8) Maintenance & Winterization

### Service



We suggest that our fire products be serviced by a professional certified in the US by the National Fireplace Institute (NFI) as NFI Gas Specialists.

**WARNING:** Turn off Power, Gas, and Water for all maintenance activities.

**WARRANTY REQUIREMENT:** Do not use unapproved chemical additives to the water. Chemicals such as chlorine will reduce the pump life and void the warranty.

**WARRANTY REQUIREMENT:** The water feature must be winterized in areas that drop below freezing.

### Water Conditioning:

1) The only chemical HPC has testing or recommends is Spa Foundations from Natural Chemistry. Apply 2 teaspoons every 6 weeks. This is to help maintain water clarity. Your application may vary. Too much may cause foaming.

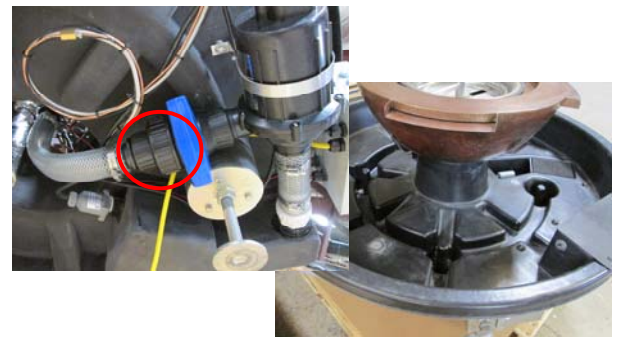
### Maintenance:

- 1) For optional fire feature refer to fire pit instructions.
- 2) The water basin must be winterized in areas that drop below freezing temperature.
- 3) Keep any debris out of water basin, water feature or optional fire pit- clean as needed.
- 4) Clean filter as needed. Remove filter, rinse out with water and replace.
  - a. 1 x week filter cleaning is recommended. Your application may vary.



### Winterization/Drain and Cleaning:

- 1) Turn off Water, Electric and Gas for units with optional fire feature.
- 2) Open the drain and allow all water to drain into your local drain.
- 3) Separate the union on the outlet side of the pump allowing it to drain.
  - a. This will result in several gallons of water on the ground.
- 4) Remove the liner and filter and towel dry the tank and gussets.
- 5) Cover Unit.



## 9) Troubleshooting

Below are some potential causes and countermeasures to the symptoms indicated in bold. If still unable to resolve issue, please contact your retailer or certified technician.

**WARNING:** If your unit is equipped with an optional fire feature refer to HPC fire pit instructions.

### **Water will not turn on**

- |                      |   |
|----------------------|---|
| 1. Not Enough Water. | Your unit has a low level sensor and will not run with low water level. |
| 2. Breaker Tripped   | Reset breaker on electrical control box.                                |
| 3. No power.         | Ensure there is power to the unit.                                      |
| 4. Defective Pump.   | Replace Pump.   |

### **Lights will not turn on**

- |                          |  |
|--------------------------|--|
| 1. No Power.             | Ensure there is power to the unit.       |
| 2. Breaker Tripped       | Reset Breaker on electrical control box. |
| 3. LED Driver defective  | Replace LED Driver.                      |
| 4. Defective Light Strip | Replace Light Strip                      |

### **Weak Water Flow**

- |                      |   |
|----------------------|---|
| 1. Dirty Filter      | Clean Filter with water                 |
| 2. Ball Valve Closed | Open ball valve on outlet side of pump. |
| 3. Defective Pump    | Replace Pump                            |

### **Water Level Low or High**

- |                             |   |
|-----------------------------|---|
| 1. Clogged Over Flow        | Clean Over Flow.  |
| 2. Autofill float defective | Verify float valve is working properly replace as needed. |



## 10) Replacement Parts

Please call HPC customer services for replacement parts.

## 11) Warranty

### Limited Warranty

Hearth Products Controls Company (HPC) warrants its water products against manufacturing defects that prevent safe and correct function for:

Polyethylene Basin/Liner- 3 years, 3 years comm.

Water Pump- 2yrs, 1yr comm.

Electronics/LED's- 2yrs, 1yr comm.

Float / Sensors- 2yrs, 1yr comm.

Hose / Fittings- 2yrs, 1yr comm.

This commences from the date of original sale / shipment from HPC FOB Dayton, Ohio.

This warranty is for parts and in-house (HPC) labor. The defective product must be sent back to HPC with a Return Merchandise Authorization (RMA) issued by HPC for that specific product and any other additional information for the nature of the defect or warranty claim.

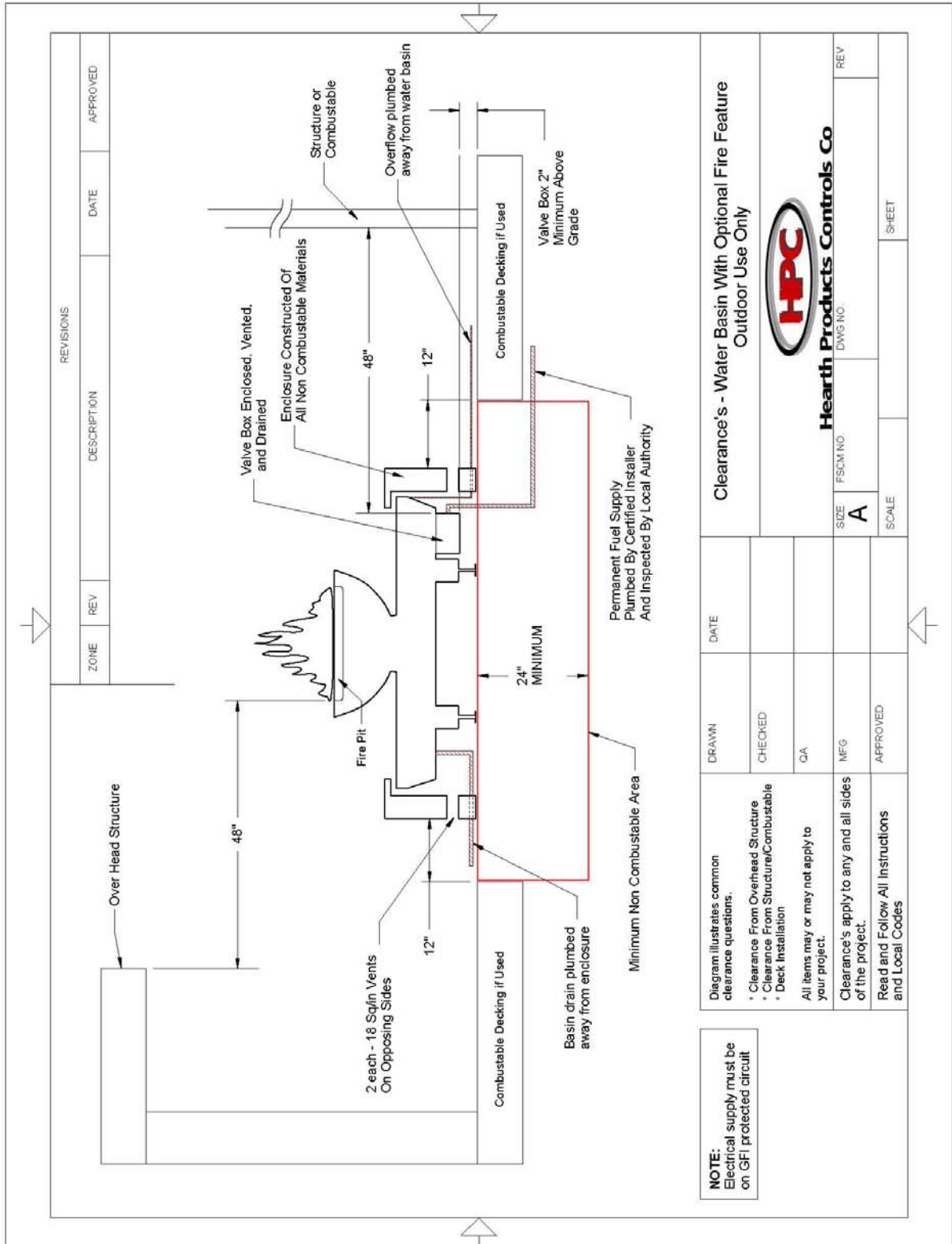
The warranty does not cover items that have been damaged by overheating, modification, abuse, or improper storage. Also any labor involving installation or maintenance with the unit is not covered.

This warranty excludes claims for consequential, indirect-collateral expenses arising from product defects or warranty recovery.

Small leaks in connections, fittings or water effects are not covered under warranty.

Minor flaws, variations and normal aging in hand crafted bowls are not covered under warranty.

# 12) Clearances



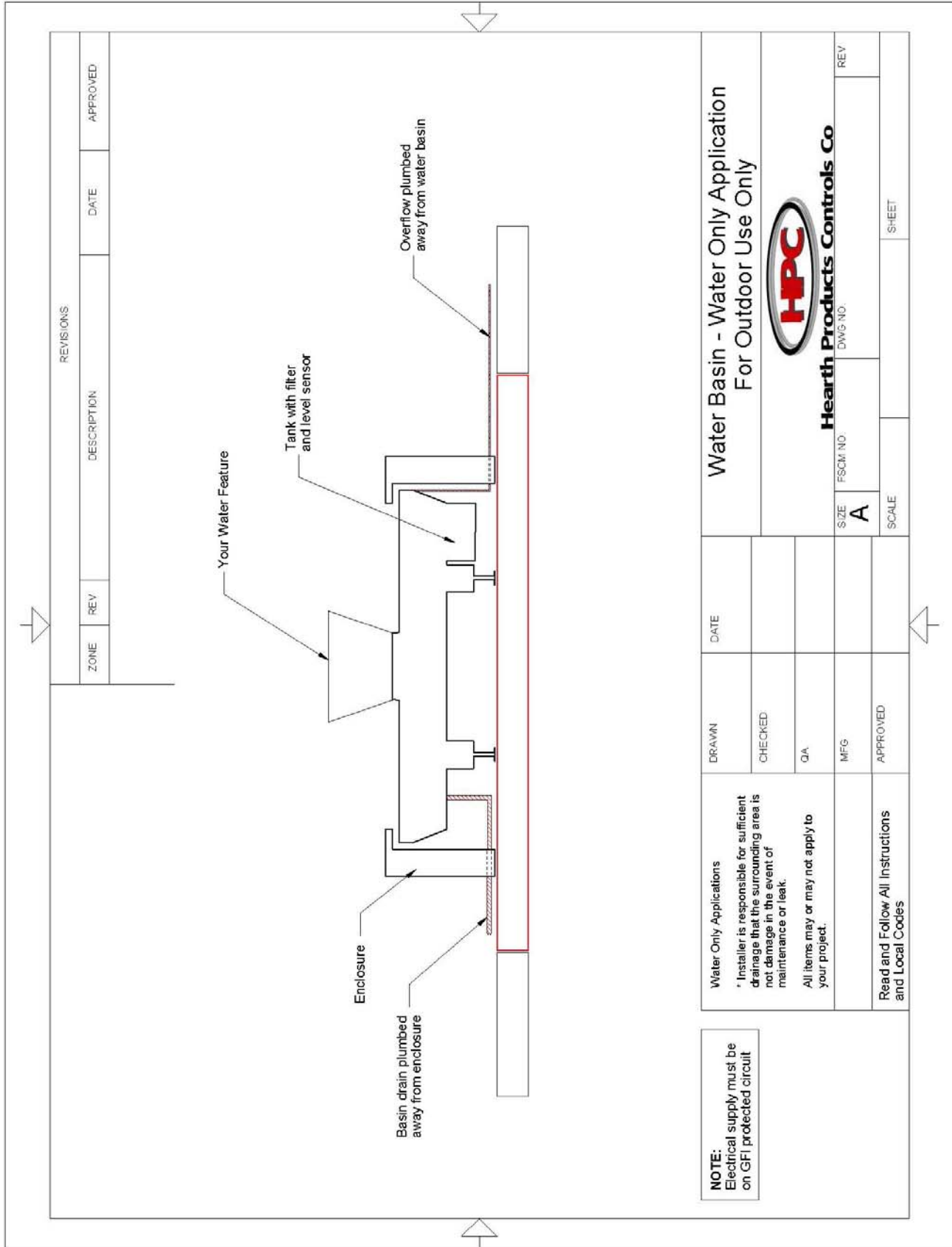
REVISIONS		DATE	APPROVED
ZONE	REV	DESCRIPTION	

**Clearance's - Water Basin With Optional Fire Feature**  
Outdoor Use Only

**Hearth Products Controls Co**

SIZE: FSCM NO. A  
DWS NO. SCALE: SHEET

Diagram illustrates common clearance questions.	DRAWN	DATE
* Clearance From Overhead Structure	CHECKED	
* Clearance From Structure/Combustable	QA	
* Deck Installation	MFG	
All items may or may not apply to your project.	APPROVED	
Clearance's apply to any and all sides of the project.		
Read and Follow All Instructions and Local Codes		




REVISIONS			
ZONE	REV	DESCRIPTION	DATE
			APPROVED

**NOTE:**  
Electrical supply must be on GFI protected circuit

**Water Only Applications**  
\* Installer is responsible for sufficient drainage that the surrounding area is not damaged in the event of maintenance or leak.  
All items may or may not apply to your project.

**Read and Follow All Instructions and Local Codes**

DRAWN	DATE	Water Basin - Water Only Application For Outdoor Use Only	
CHECKED		 <b>Hearth Products Controls Co</b> DWG NO.	
QA			
MFG		SIZE	REV
APPROVED		A	
		SCALE	SHEET