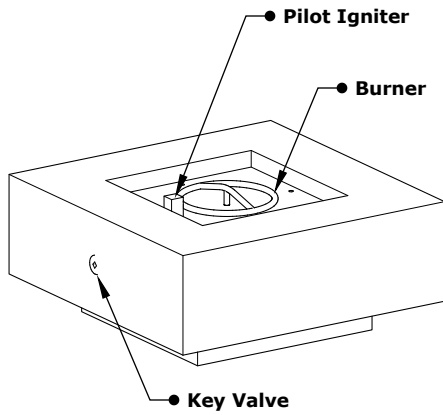
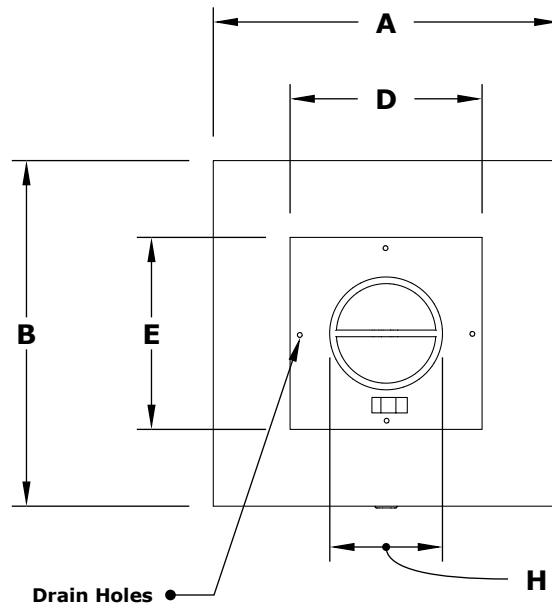


SQUARE CABO FIRE PIT

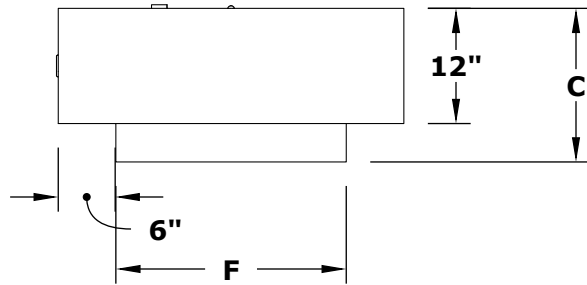
Hammered Copper, Corten Steel, Stainless Steel, Powder Coated Steel



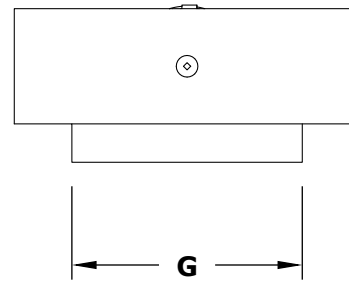
ISOMETRIC VIEW



TOP VIEW



RIGHT SIDE VIEW



FRONT SIDE VIEW

| Hammered Copper | Corten Steel | Stainless Steel | Powder Coated | A | B | C | D | E | F | G | H | BTU |
|-----------------|--------------|-----------------|---------------|-----|-----|-----|-----|-----|-----|-----|-----|--------|
| OPT-CBSQ36CPR | OPT-CBSQ36CS | OPT-CBSQ36SS | OPT-CBSQ36PC | 36" | 36" | 16" | 20" | 20" | 24" | 24" | 12" | 65,000 |
| OPT-CBSQ48CPR | OPT-CBSQ48CS | OPT-CBSQ48SS | OPT-CBSQ48PC | 48" | 48" | 16" | 28" | 28" | 36" | 36" | 18" | 65,000 |
| OPT-CBSQ60CPR | OPT-CBSQ60CS | OPT-CBSQ60SS | OPT-CBSQ60PC | 60" | 60" | 16" | 40" | 40" | 48" | 48" | 24" | 65,000 |

Fire Pit Material: Various Metals
 Pan Material: 304 Stainless Steel
 Burner Material: 304 Stainless Steel

Standard 1" Flange on all pans
 Standard 2" Depth on all pans

110V ELECTRONIC IGNITION
 ANSI Z21.97-(2017) / CSA 2.41-(2017)



Match Lit Unit Includes: Pan, Burner, Gas Orifice, Gas Hoses, Key Valve, Key,
 110v Ignition Unit Includes: Pan, Burner, Gas Orifice, Gas Hoses, Key Valve, Key, Plug & Play Electronic Valve, Pilot Igniter.